

Gypsum Board Steel Profiles

The material for Gypsum Board Suspended Ceiling and Separation Wall profiles are hot-dip galvanized steel framing profiles. These profiles are shaped and named Ceiling C and Ceiling U for ceilings, Wall C and Wall U for separation walls. They are being produced 3000mm as standard but specific demanded dimensions are also available. Gypsum Board Suspended Ceiling and Separation Wall profiles can be used as carrier systems by using accessories.

Accessories

Fixing Bracket, Klips, Spring Hanger, Coupler, T Hanger Bracket, Hanger Wire, Steel Anchor, Plastic Anchor, Self Tapping Screw, Self Drilling Screw. There is also a L corner profile available for drywall ceiling and wall finishings.

There is a profile for drywall of the following types:

Track it is designated as PN (UD) (interpretation - track profile). U-shaped in cross-section, with smooth side walls. It is used as a base-support for racks and lintels. It is fastened along the perimeter of the structure, then all other elements of the system are installed in it.

Dimensions:

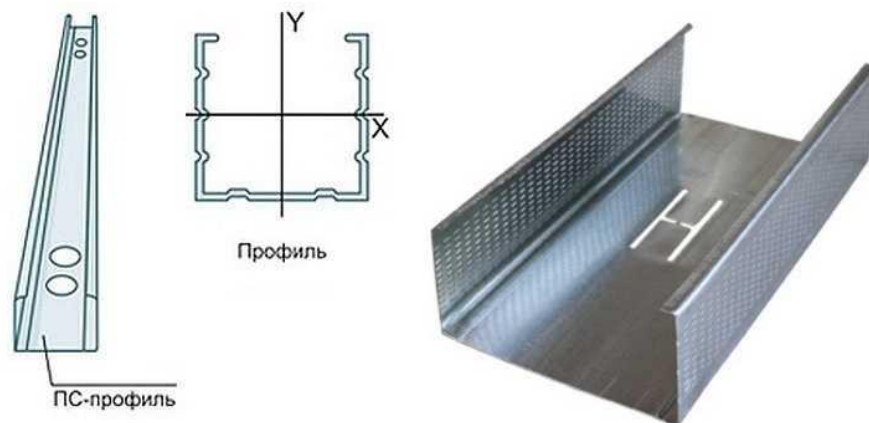
- 28 x 27 mm;
- 50 x 40 mm;
- 65 x 40 mm;
- 75 x 40 mm;
- 100 x 40 mm.



Studs designated PS (CD) - studs-mount profile. It is inserted into the track, and the gypsum board is attached to it. Accordingly, it bears the main load and must have high rigidity. It has a U-shaped structure with additional shelves and stiffening ribs, which give it greater rigidity.

Dimensions:

- 50 x 50 mm;
- 65 x 50 mm;
- 75 x 50 mm;
- 100 x 50 mm.



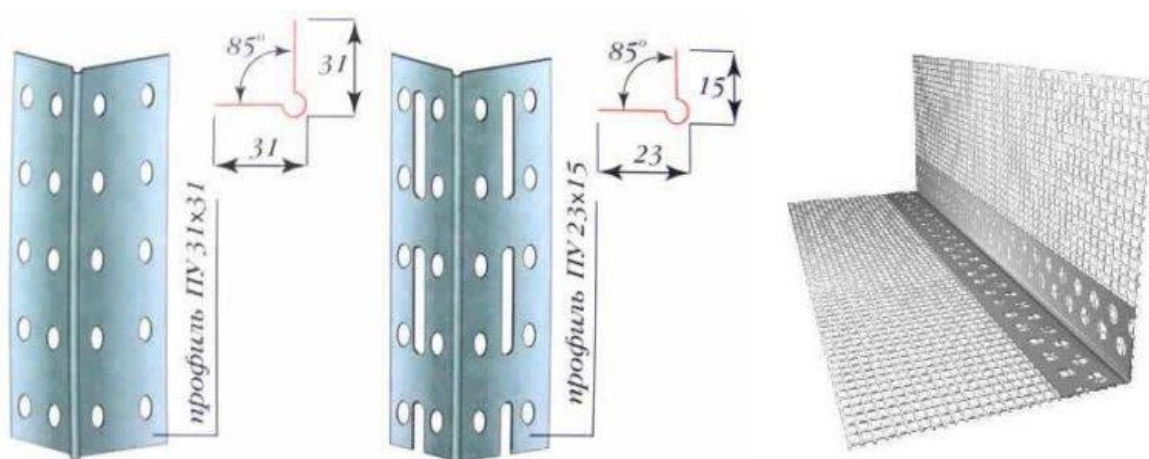
Ceiling. It is designated PP and PPN. Accordingly - the guide and the supporting ceiling profile. The ceiling guide has a section in the shape of the letter "P", has a smaller cross section than the wall one. Ceiling bearing profile - has shelves and stiffeners, but differs in shelves of lower height. A lower height, in order to "take away" less heights from the room and that the ceiling plasterboard is thinner, creates less stress on the frame.

- 60 x 27 mm-pp
- 28 x 27 mm –ppn



There are several types of additional profiles that are used in finishing works, when creating a suspended frame for the ceiling, for attaching rack profiles to walls, etc.

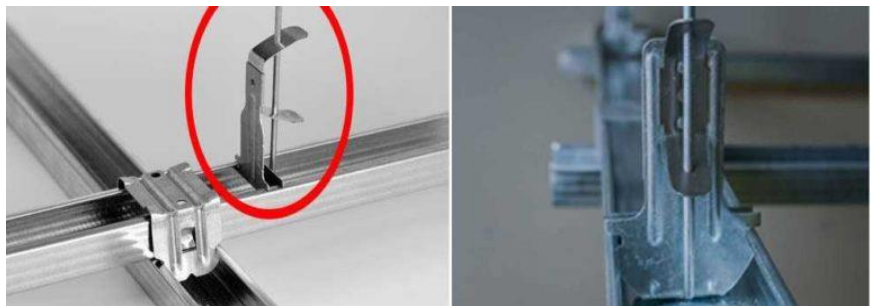
- Angular. In section - a right angle with a slightly protruding central part. It is used to decorate the corners of plasterboard structures. There are several types:
- Both shelves are perforated with large holes - so that the corner becomes part of the plaster, due to which they are held.
- Corner profile for gypsum board with mesh. A strip of mesh can be glued to the edges of the perforated corner - for better adhesion followed by finishing.
- On a paper basis - two metallized stripes are glued to thick paper. They are used in unloaded places - they decorate window openings, the edges of niches, shelves and other similar products.



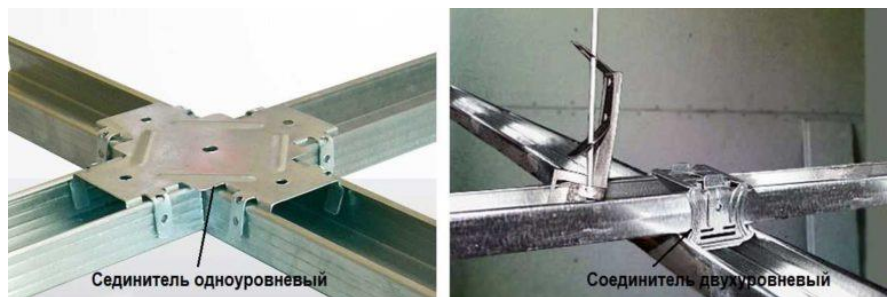
- **Perforated hangers.** It is a 125 x 60 mm tape fastener. It is divided into three parts: the middle one is used to fix the suspension to the ceiling / wall, the outer ones are perforated, bent at 90 °, the profiles are attached to them.



Anchor hangers for PP (ceiling profiles). There are several types. Used when installing false ceilings. A distinctive feature is that it is easy to adjust the height, which is necessary when setting the plane of the ceiling.



One-level and two-level connector for PP (crab). Plate with fixing elements for fastening crossing profiles. Used when constructing frames for suspended ceilings.

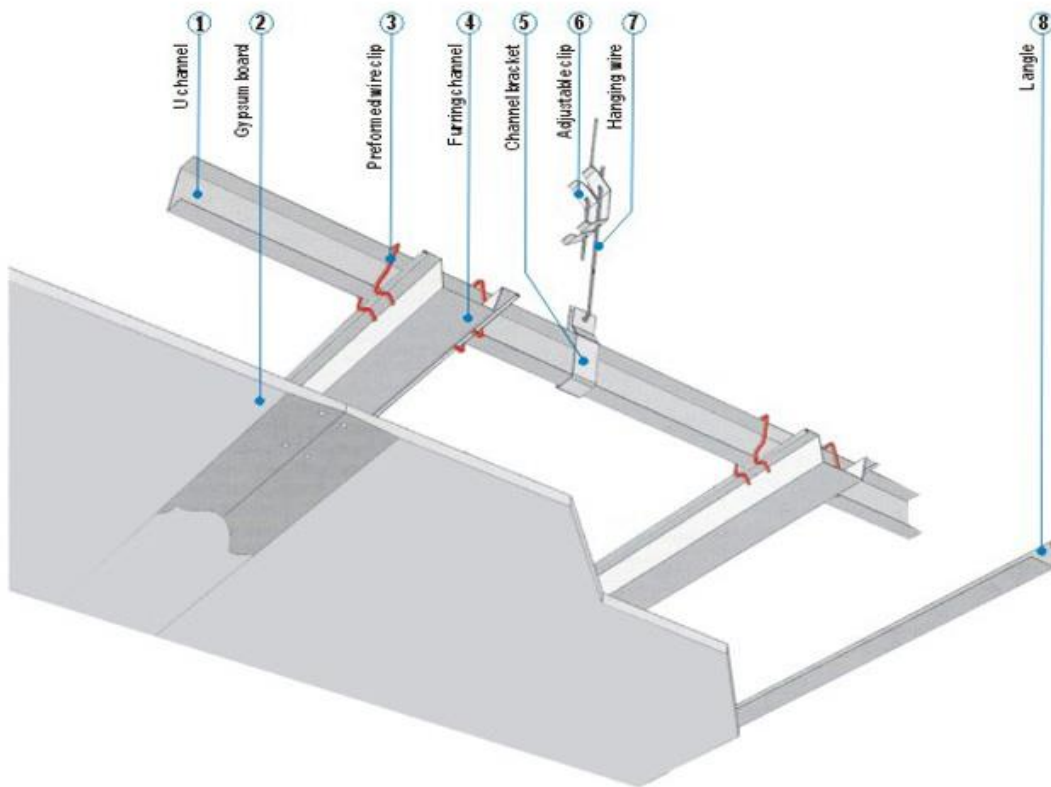


The Furring ceiling system is a suspended steel framing system, clad with gypsum boards. Its grids are concealed behind the ceiling board. The finishing surface would be smooth and may receive direct decoration such as painting and pasing wall paper. It is mostly used in where plain ceiling is required.

Gypsum boards are usually used as the surface material of Furring ceiling system. Compared with combustible wooden ceiling, our products are made of incombustible and durable galvanized steel. Applied with gypsum board our product can provide a safer and fire-resistive ceiling.

The system is a suspended steel framing system, clad with gypsum boards, and it is mostly

used in where plain ceiling is required.



Specification

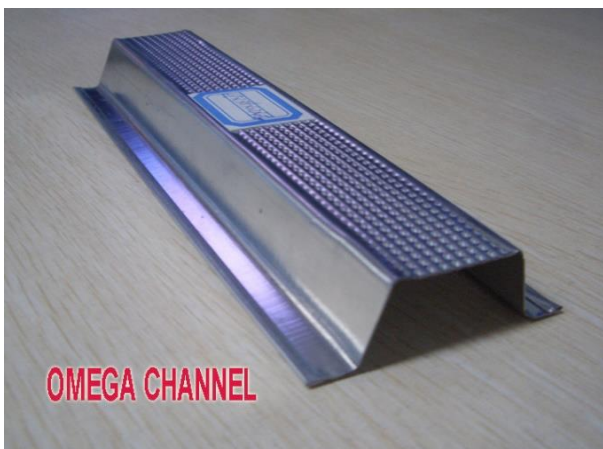
16mmx35mmx65mm

22mmx35mmx68mm

22mmx50mmx80mm

Available thickness: 0.45-1.00 mm

Available length: standard - 3.0M, but other lengths are available as per request



Applications

Factories, department stores, hospital, office buildings, residences, restaurants, etc

Advantages

- 1. Easy and fast for installation.
- 2. Low cost.



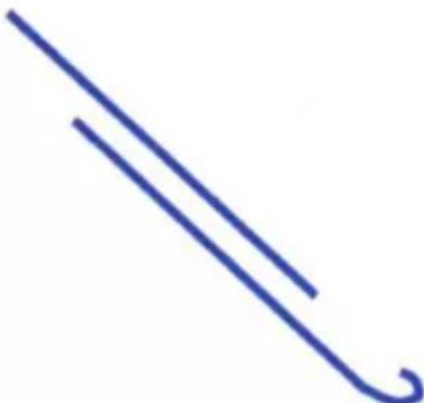
Use the adjustable clip to suit different height of suspension systems



Suspended by wire hanger Used to fix the Main Channel



For coupling Main Channel and Furring channel



For hanging different type of suspended systems